



FLAT 8, FOYE HOUSE, BRIDGE ROAD, LEIGH WOODS, BS8 3PE

“A large and well proportioned flat in leafy Leigh Woods”

Summary

- Two bedrooms
- Ground Floor Apartment
- Integrated Garage
- Private Allocated Parking
- Private Terrace
- Communal Gardens
- Close Proximity to Clifton Village

Situation

Leigh Woods is conveniently placed within a quarter of a mile of Clifton Village (via Brunel's iconic Clifton Suspension Bridge) which offers a wide selection of high street shops, boutiques, cafes and restaurants. Bristol City Centre and floating harbour are approximately 1.5 miles travelling distance. The M5 is within 3 miles.

Nearby Ashton Court offers over 800 acres of parkland and many activities are on offer such as mountain biking, pitch & putt and beautiful countryside walks. Well respected golf clubs of Bristol and Clifton and Long Ashton are within two miles of the property.

Nearby there is a wide selection of schooling within the vicinity that includes Clifton College, Clifton High School, Badminton, QEH and Bristol Grammar School.

Description

A well proportioned two double bedroom ground floor apartment with private terrace, garage and parking. Set within beautiful communal gardens.

On entering the apartment there is a large hall; perfect for storage and coats with door off to a large reception room which allows room for a dining table and living area, ideal for entertainment and modern day living.

The kitchen off houses a range of fitted appliances including hob, and sink. Space for dishwasher and washing machine. To the other end the apartment are the two double bedrooms which are serviced via the main bathroom that comprises toilet, basin, bath and separate shower.

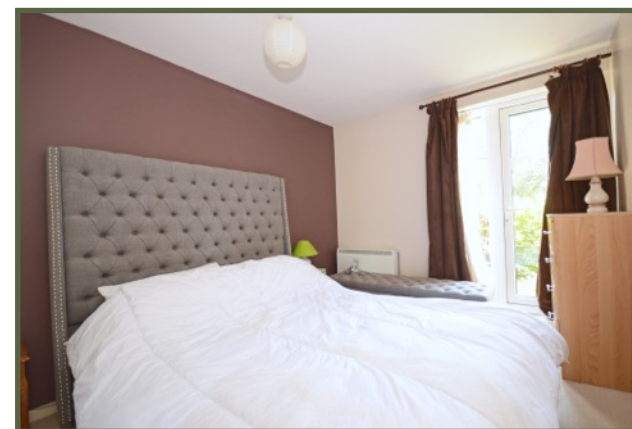
Outside

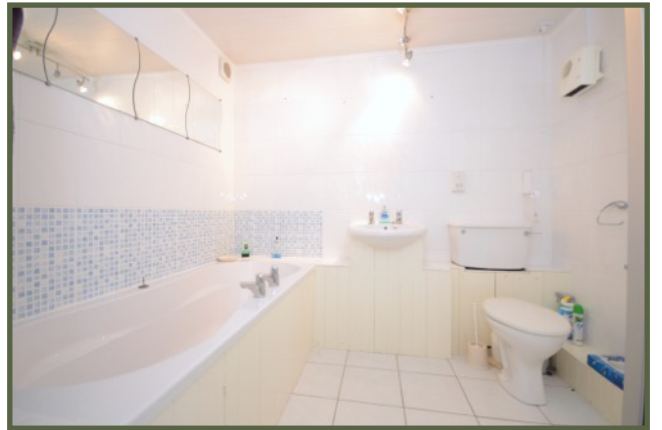
In addition to the private parking the apartment benefits from a south facing terrace which is perfect for alfresco dining.

The garage can be accessed via the up and over door or alternatively from the apartment.

Directions

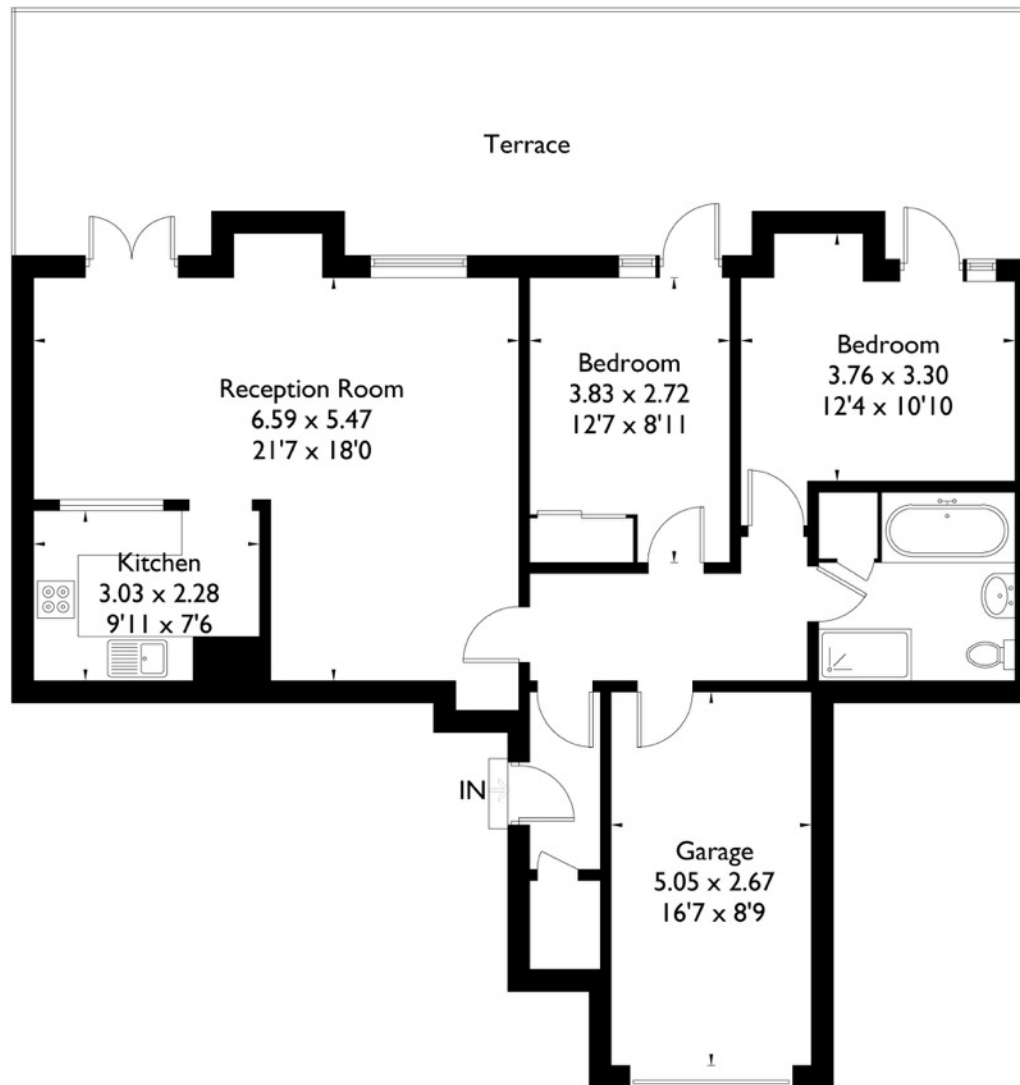
From Roderick Thomas in Clifton proceed up Sion Hill and turn left to head over the Clifton Suspension Bridge onto Bridge Road. The property is on the left before you come to the first set of traffic lights.





Flat 8, Foye House, Bridge Road, Leigh Woods, Bristol, BS8 3PE

Approximate Gross Internal Area
88.2 sq m / 949 sq ft
(Including Garage)



Clifton Office, 69 Princess Victoria Street, Clifton Village, Bristol, BS8 4DD

Tel: 0117 9734464 | clifton@roderickthomas.co.uk

IMPORTANT NOTICE

Roderick Thomas, their clients and any joint agents state that these details are for general guidance only and accuracy cannot be guaranteed. They do not constitute any part of any contract. All measurements are approximate and floor plans are to give a general indication only and are not measured accurate drawings. No guarantees are given with regard to planning permission or fitness for purpose. No apparatus, equipment, fixture or fitting has been tested. Items shown in photographs are not necessarily included. Purchasers must satisfy themselves on all matters by inspection or otherwise. **VIEWINGS** - interested parties are advised to check availability and current situation prior to travelling to see any property.